

VILLA TIZA. LA QUINTA

Built closed area	605,50 m ²
Covered terrace	42,92 m ²
Open terrace	246,40 m ²
Open terrace pergola	18,01 m ²
Total terrace	307,33 m ²
Pool	73,30 m ²
Total built area	986,13 m ²


5

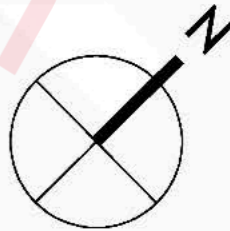

5

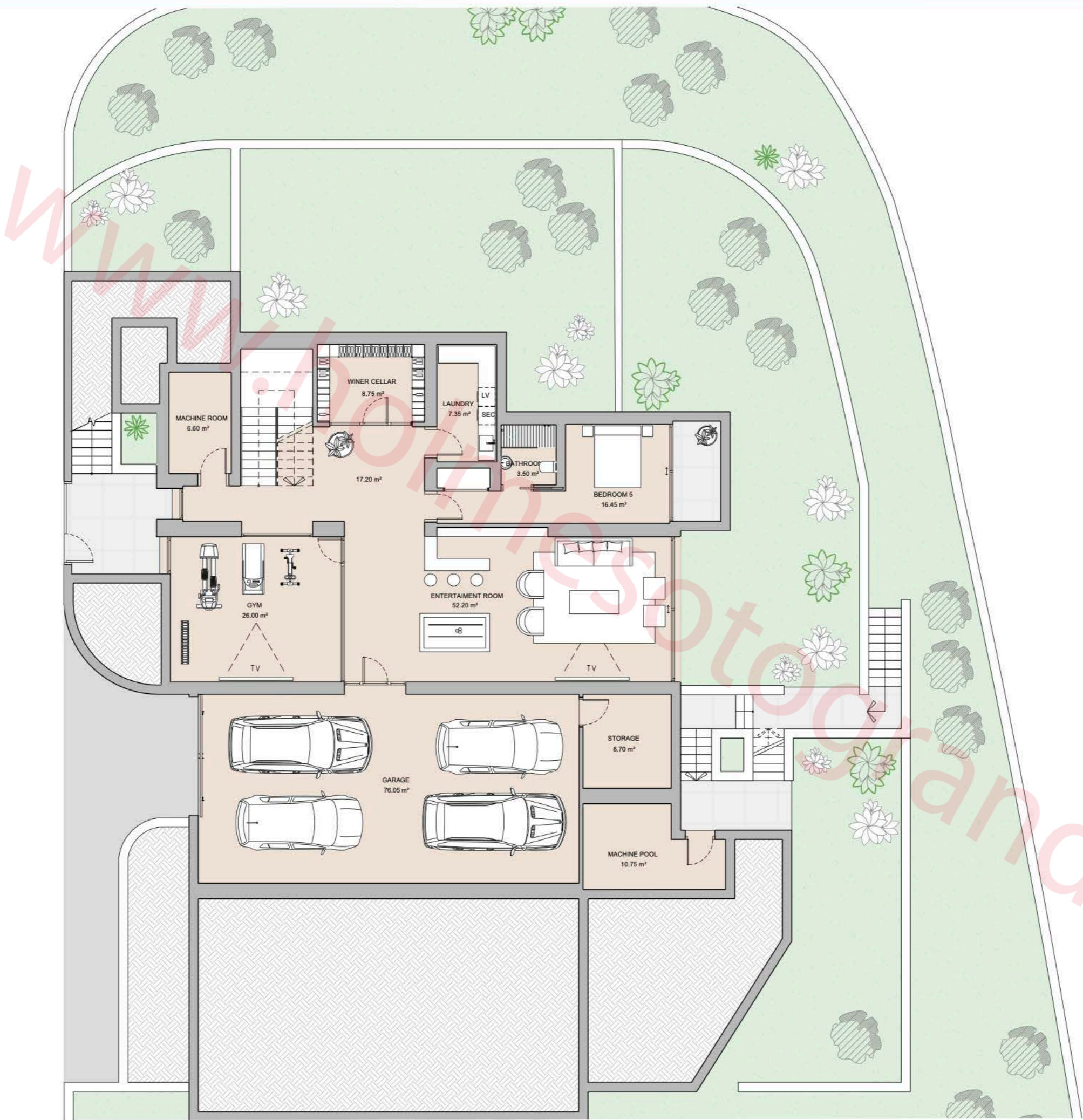

986,13 m²


4

1m 5m 10m
SCALE 1:300

This document is for information only. The areas and measurements are approximate and may be modified for technical reasons and/or administrative issues. The room areas marked on the drawing are usable space.





VILLA TIZA . LA QUINTA

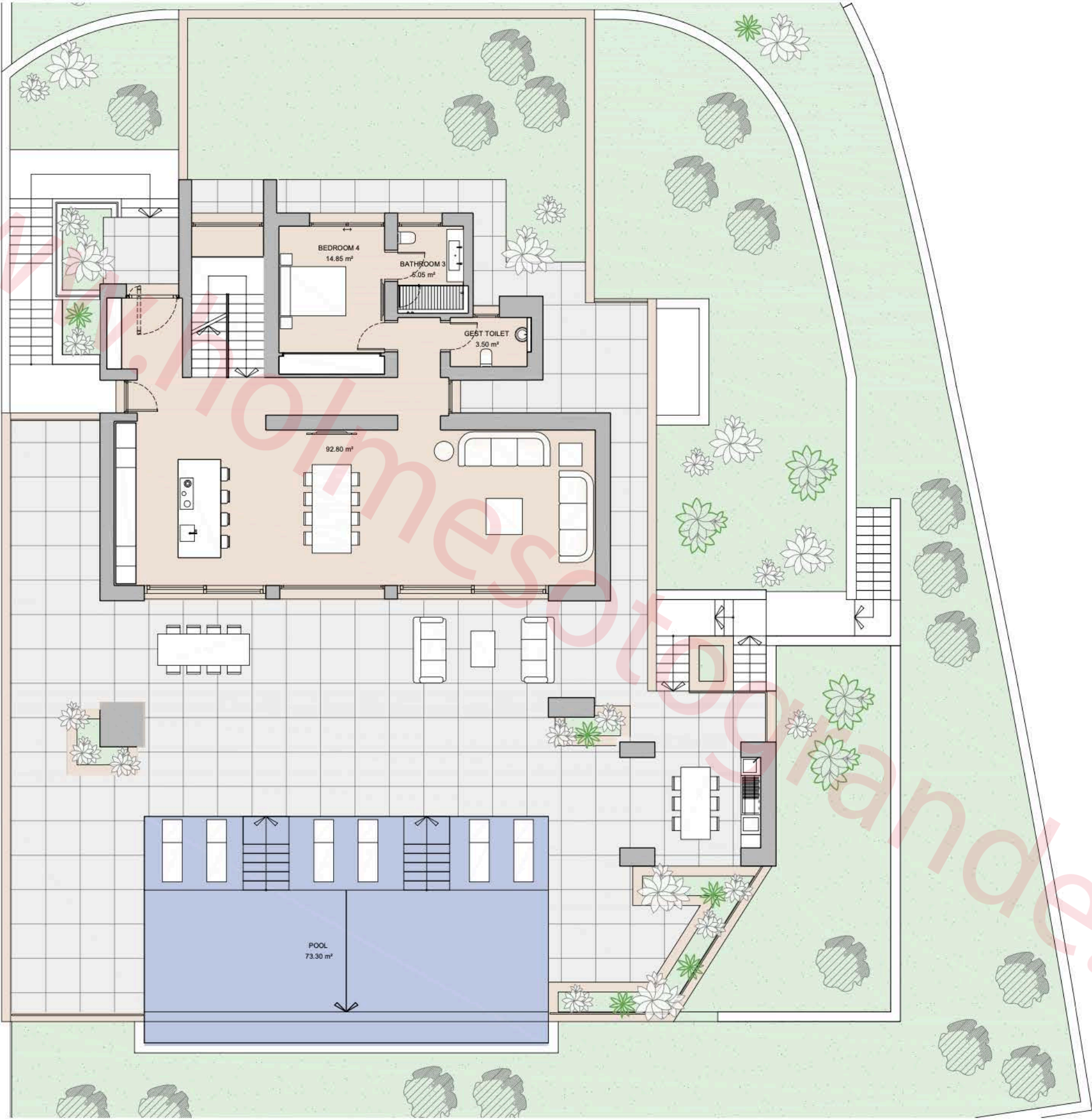
Built closed area	605,50 m ²
Covered terrace	42,92 m ²
Open terrace	246,40 m ²
Open terrace pergola	18,01 m ²
Total terrace	307,33 m ²
Pool	73,30 m ²
Total built area	986,13 m ²



55986,13 m²4

1m 2m 3m 4m 5m
SCALE 1:150

This document is for information only. The areas and measurements are approximate and may be modified for technical reasons and/or administrative issues. The room areas marked on the drawing are usable space.

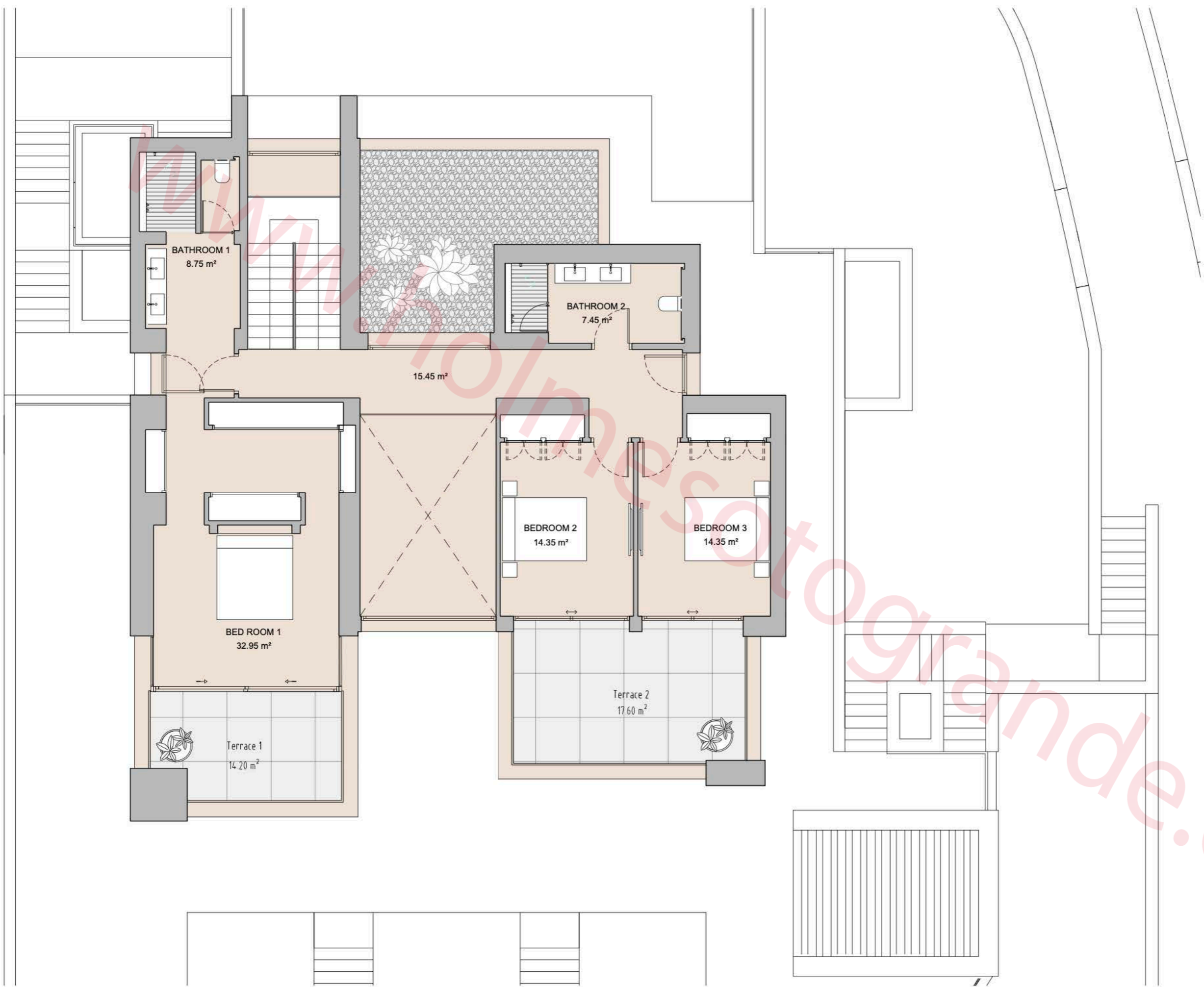


VILLA TIZA. LA QUINTA

Built closed area	605,50 m ²
Covered terrace	42,92 m ²
Open terrace	246,40 m ²
Open terrace pergola	18,01 m ²
Total terrace	307,33 m ²
Pool	73,30 m ²
Total built area	986,13 m ²





55986,13 m²4





VILLA TIZA LA QUINTA

Built closed area	605,50 m ²
Covered terrace	42,92 m ²
Open terrace	246,40 m ²
Open terrace pergola	18,01 m ²
Total terrace	307,33 m ²
Pool	73,30 m ²
Total built area	986,13 m ²


5


5


986,13 m²


4

1m 2m 3m 4m 5m
SCALE 1:100

This document is for information only. The areas and measurements are approximate and may be modified for technical reasons and/or administrative issues. The room areas marked on the drawing are usable space.