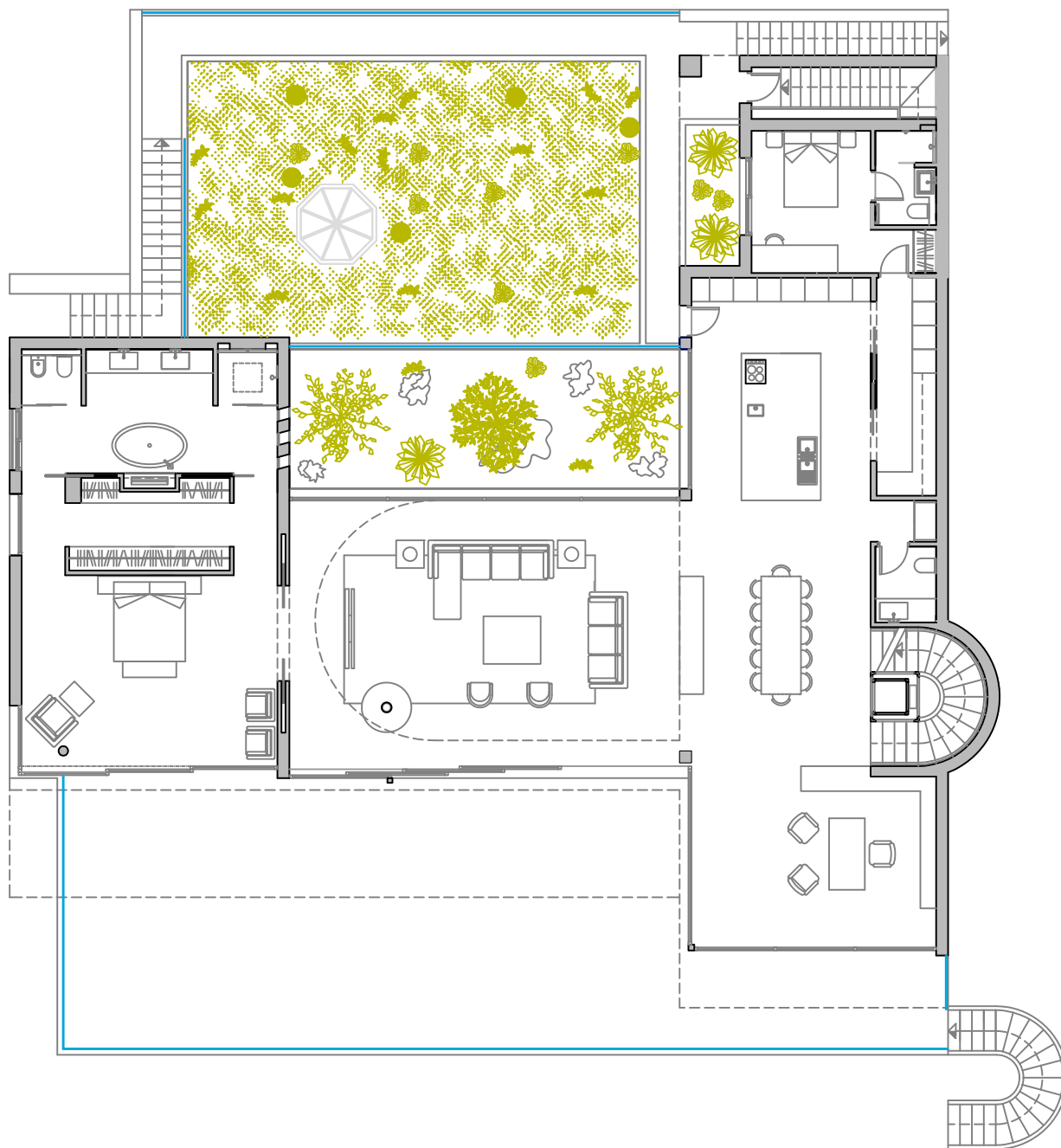


## LOWER FLOOR

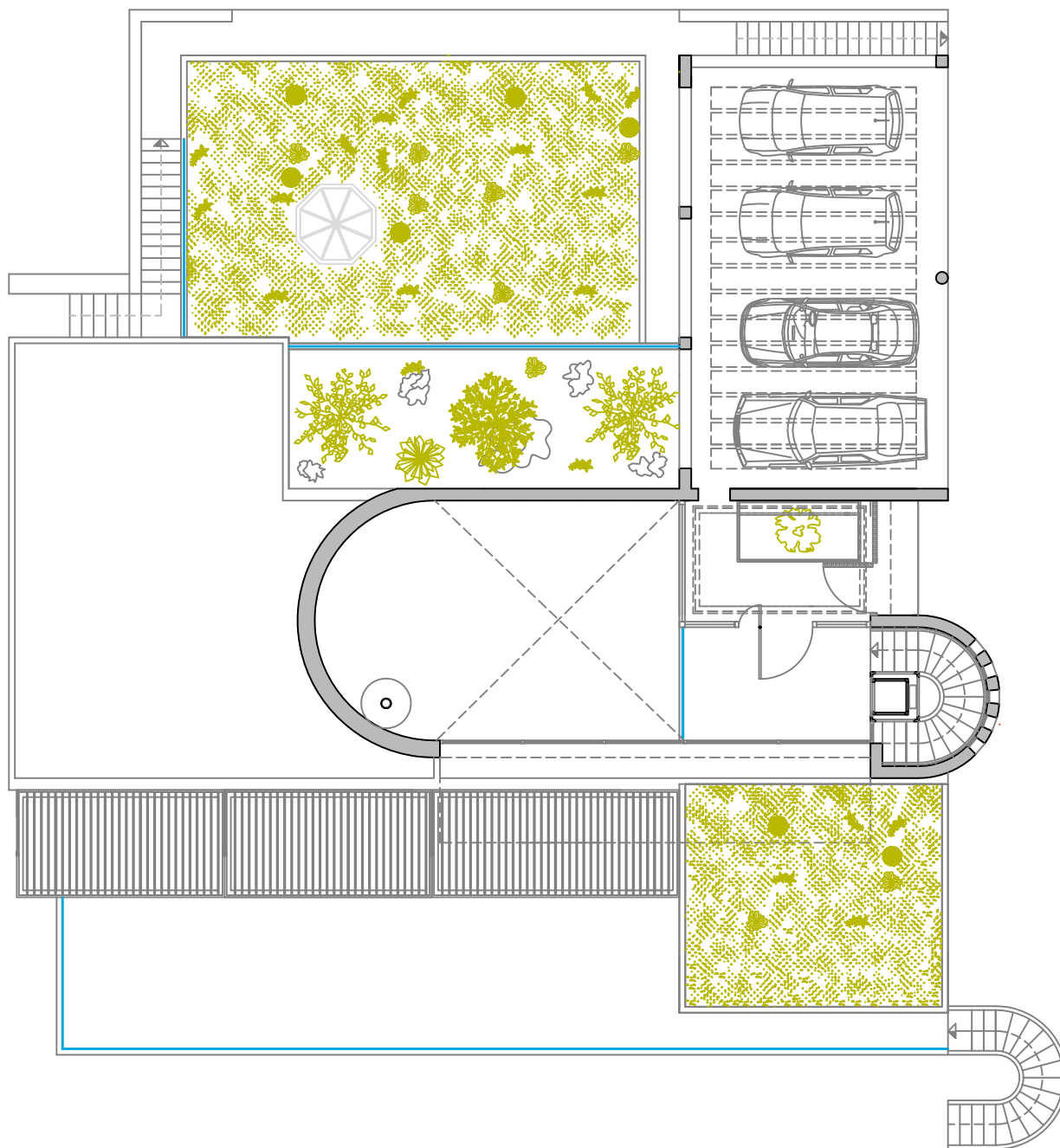
BUILD	=	528.95 M <sup>2</sup>
COVERED TERRACE	=	77.77 M <sup>2</sup>
TERRACE	=	146.56 M <sup>2</sup>

VILLA BELVEDERE



## MIDDLE FLOOR

BUILD	=	303.62 M <sup>2</sup>
COVERED TERRACE	=	42.30 M <sup>2</sup>
TERRACE	=	79.00 M <sup>2</sup>



## UPPER FLOOR

BUILD	=	34.50 M <sup>2</sup>
COVERED TERRACE	=	16.50 M <sup>2</sup>
CARPORT	=	73.74 M <sup>2</sup>